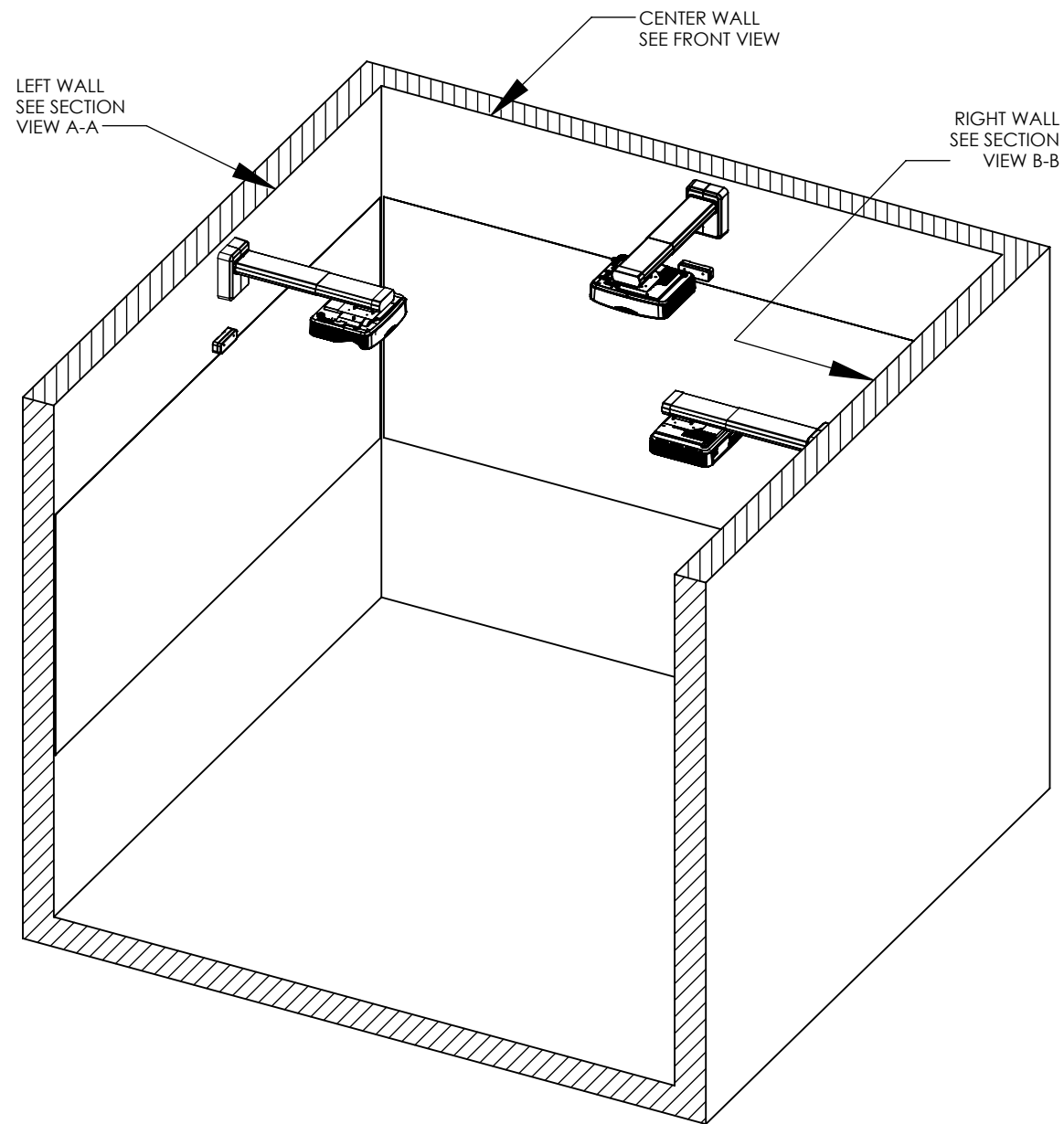
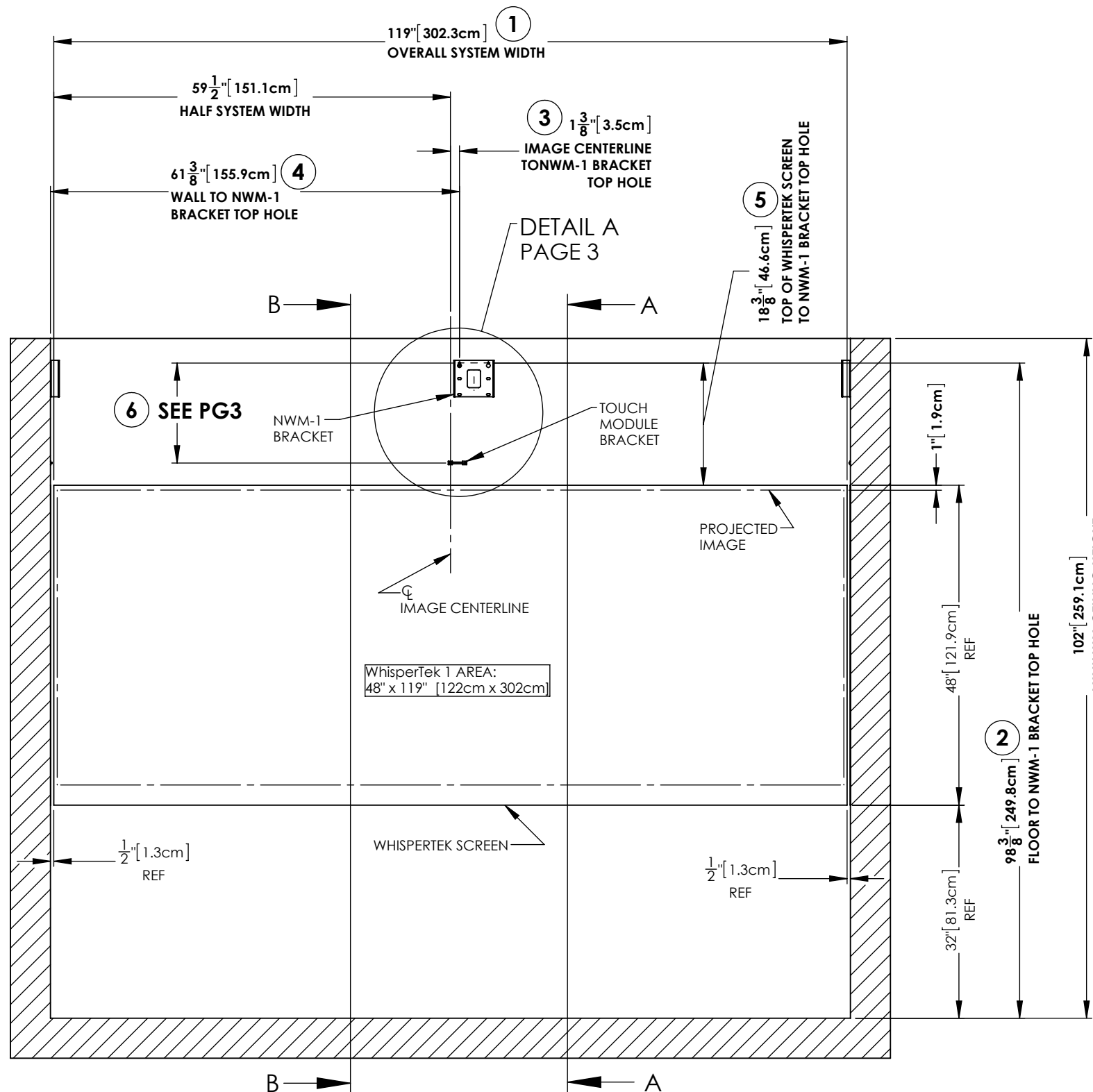


NOTES:

1. DIMENSIONS ① - ⑥ ARE CRITICAL TO THE PROPER INSTALLATION OF THE SPAN SYSTEM.
2. OPTICAL OFFSET TO IMAGE CENTERLINE AS GIVEN IN DIMENSION ③
3. NWM-1 BRACKET DIMENSIONS ARE TAKEN FROM THE TOP LEFT KEYHOLE AS GIVEN IN DIMENSION ② - ⑥
4. SEE NUREVA CUSTOMER SUPPORT FAQ FOR PROPER TRIMMING TECHNIQUES FOR THE WHISPERTEK SCREEN.



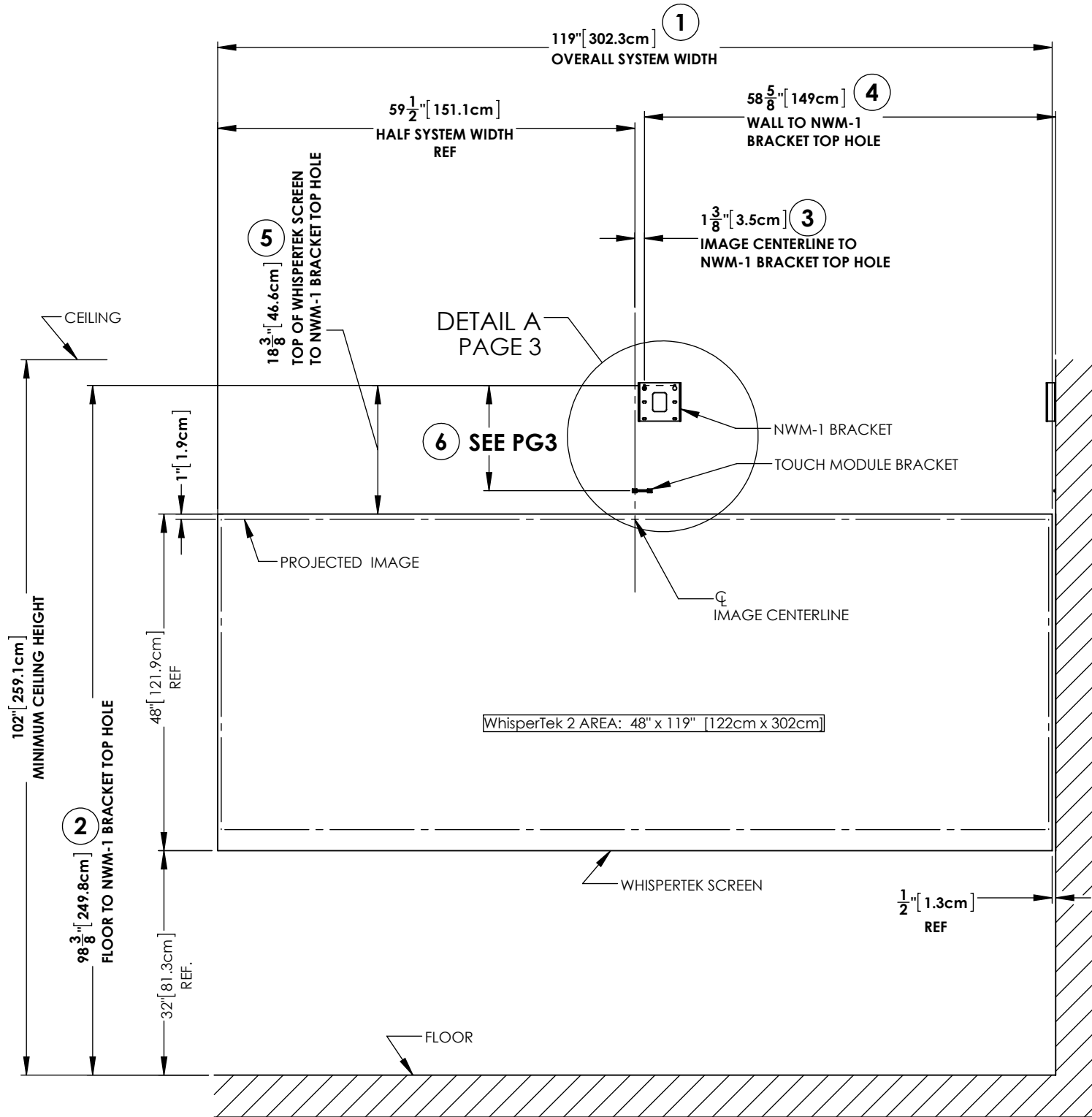
PERSPECTIVE VIEW
10' x 10' [3.05m x 3.05m] ROOM



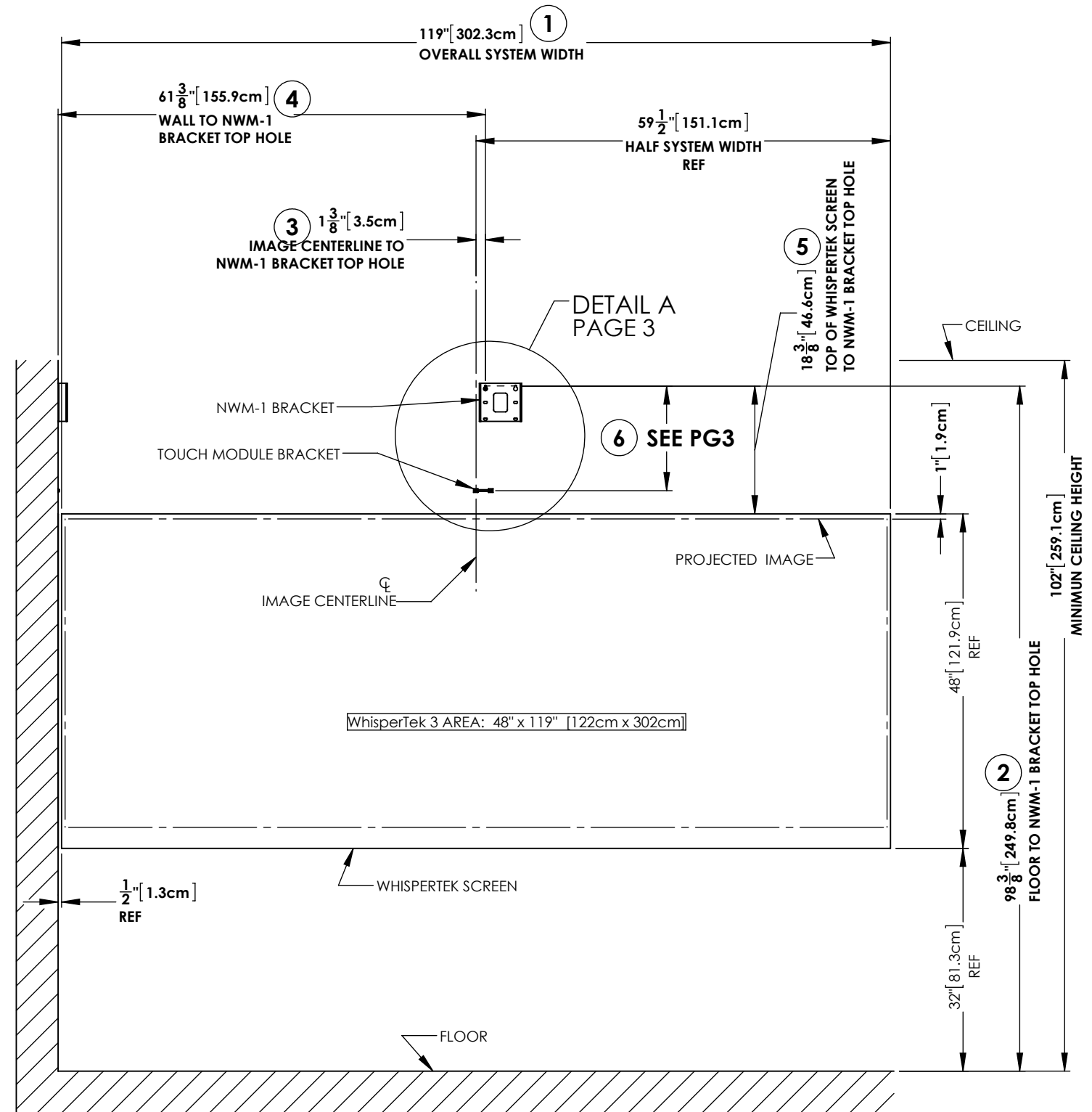
FRONT VIEW

| | |
|----------------|--|
| DRAWING NUMBER | 101114 |
| DESCRIPTION | SPAN™ SYSTEM SURROUND INSTALLATION DIAGRAM |
| REVISION | 03 |
| DATE | April 25, 2017 |
| PAGE | 1 OF 3 |

- NOTES:
 1. DIMENSIONS ① - ⑥ ARE CRITICAL TO THE PROPER INSTALLATION OF THE SPAN SYSTEM.
 2. OPTICAL OFFSET TO IMAGE CENTERLINE AS GIVEN IN DIMENSION ③
 3. NWM-1 BRACKET DIMENSIONS ARE TAKEN FROM THE TOP LEFT KEYHOLE AS GIVEN IN DIMENSION ②-⑥
 4. SEE NUREVA CUSTOMER SUPPORT FAQ FOR PROPER TRIMMING TECHNIQUES FOR THE WHISPERTEK SCREEN.



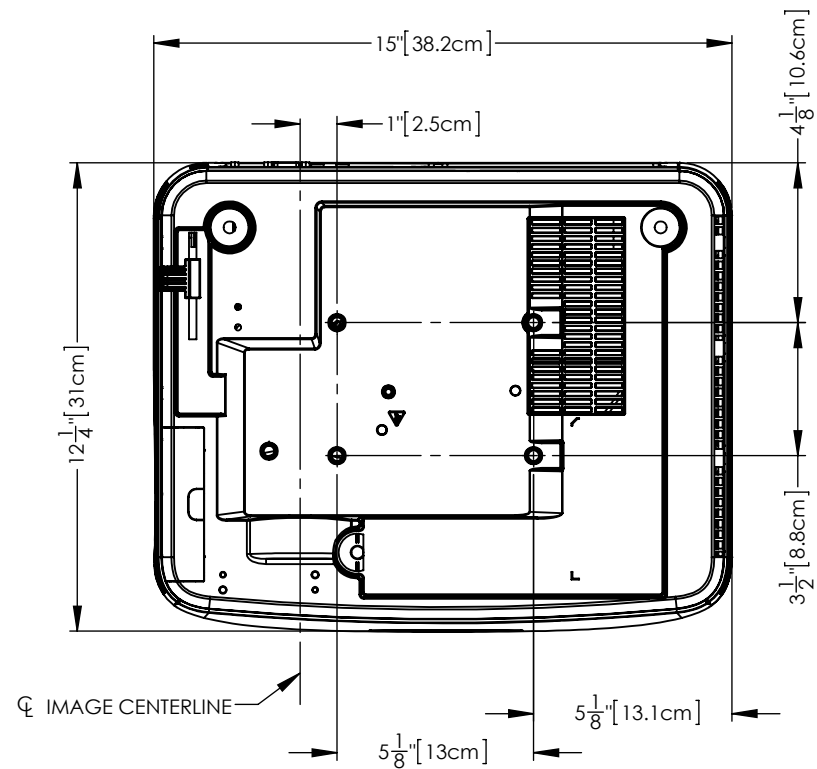
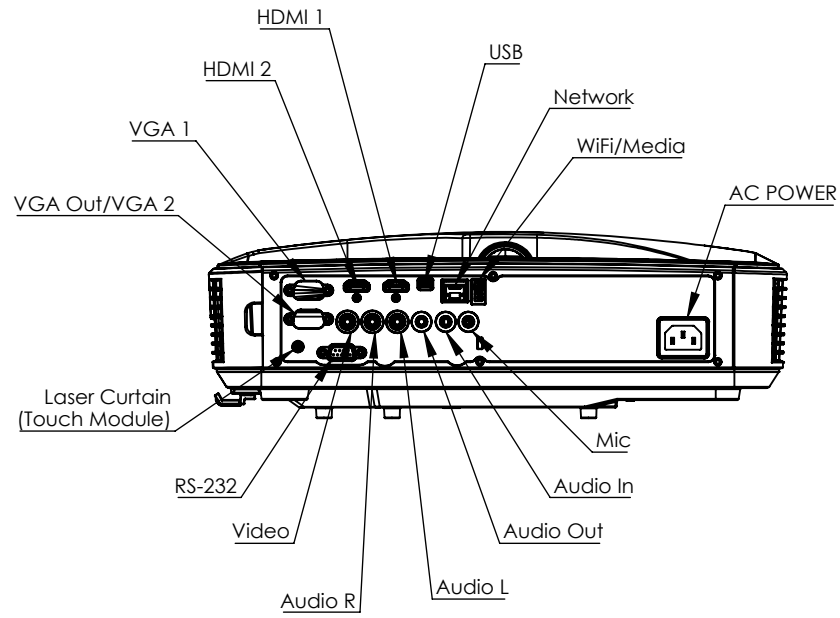
SECTION A-A
LEFT WALL



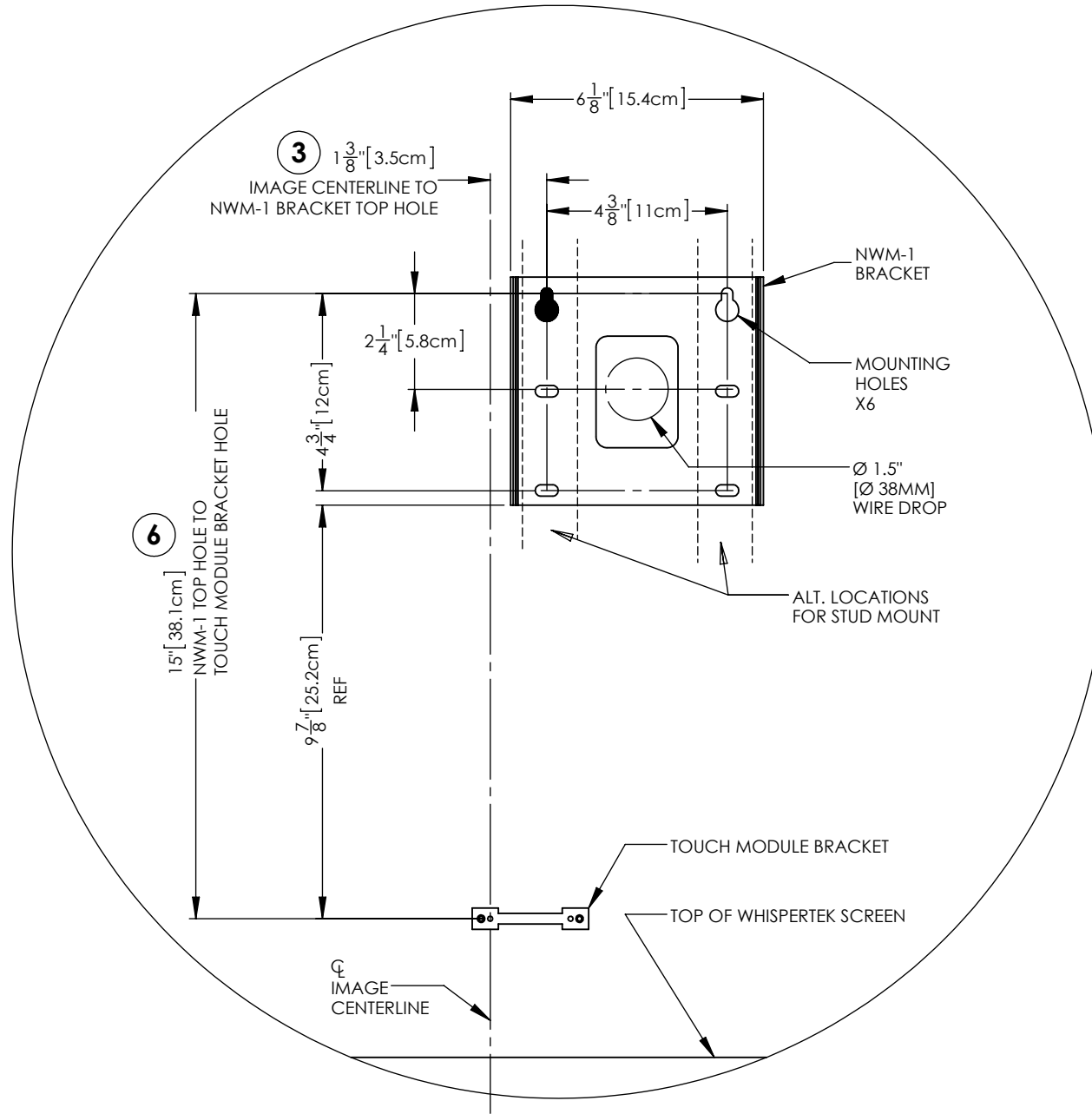
SECTION B-B
RIGHT WALL

| | |
|----------------|--|
| DRAWING NUMBER | 101114 |
| DESCRIPTION | SPAN™ SYSTEM SURROUND INSTALLATION DIAGRAM |
| REVISION | 03 |
| DATE | April 25, 2017 |
| PAGE | 2 OF 3 |

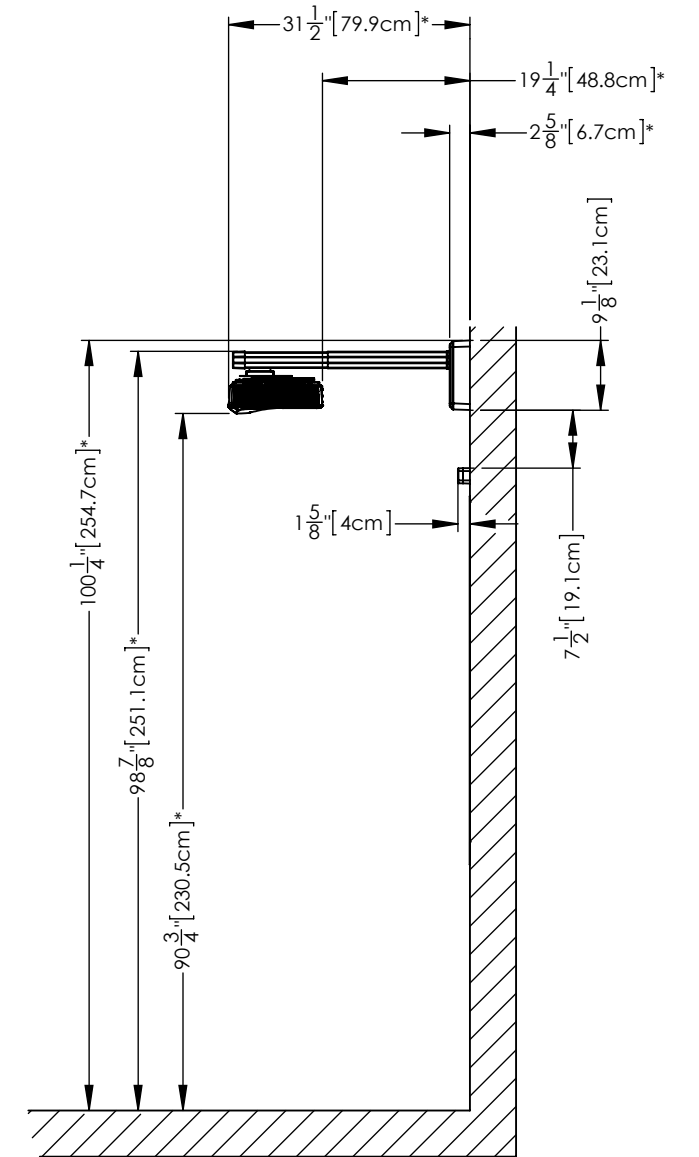
- NOTES:
1. DIMENSIONS ① - ⑥ ARE CRITICAL TO THE PROPER INSTALLATION OF THE SPAN SYSTEM.
 2. OPTICAL OFFSET TO IMAGE CENTERLINE AS GIVEN IN DIMENSION ③
 3. NWM-1 BRACKET DIMENSIONS ARE TAKEN FROM THE TOP LEFT KEYHOLE AS GIVEN IN DIMENSION ②-⑥
 4. SEE NUREVA CUSTOMER SUPPORT FAQ FOR PROPER TRIMMING TECHNIQUES FOR THE WHISPERTEK SCREEN.



PROJECTOR DETAILS



DETAIL A
TYPICAL WALL MOUNT BRACKET
AND TOUCH MODULE BRACKET



SIDE VIEW
* NOMINAL DIMENSIONS
WILL VARY WITH PROJECTED
IMAGE TOLERANCE

| | |
|----------------|--|
| DRAWING NUMBER | 101114 |
| DESCRIPTION | SPAN™ SYSTEM SURROUND INSTALLATION DIAGRAM |
| REVISION | 03 |
| DATE | April 25, 2017 |
| PAGE | 3 OF 3 |